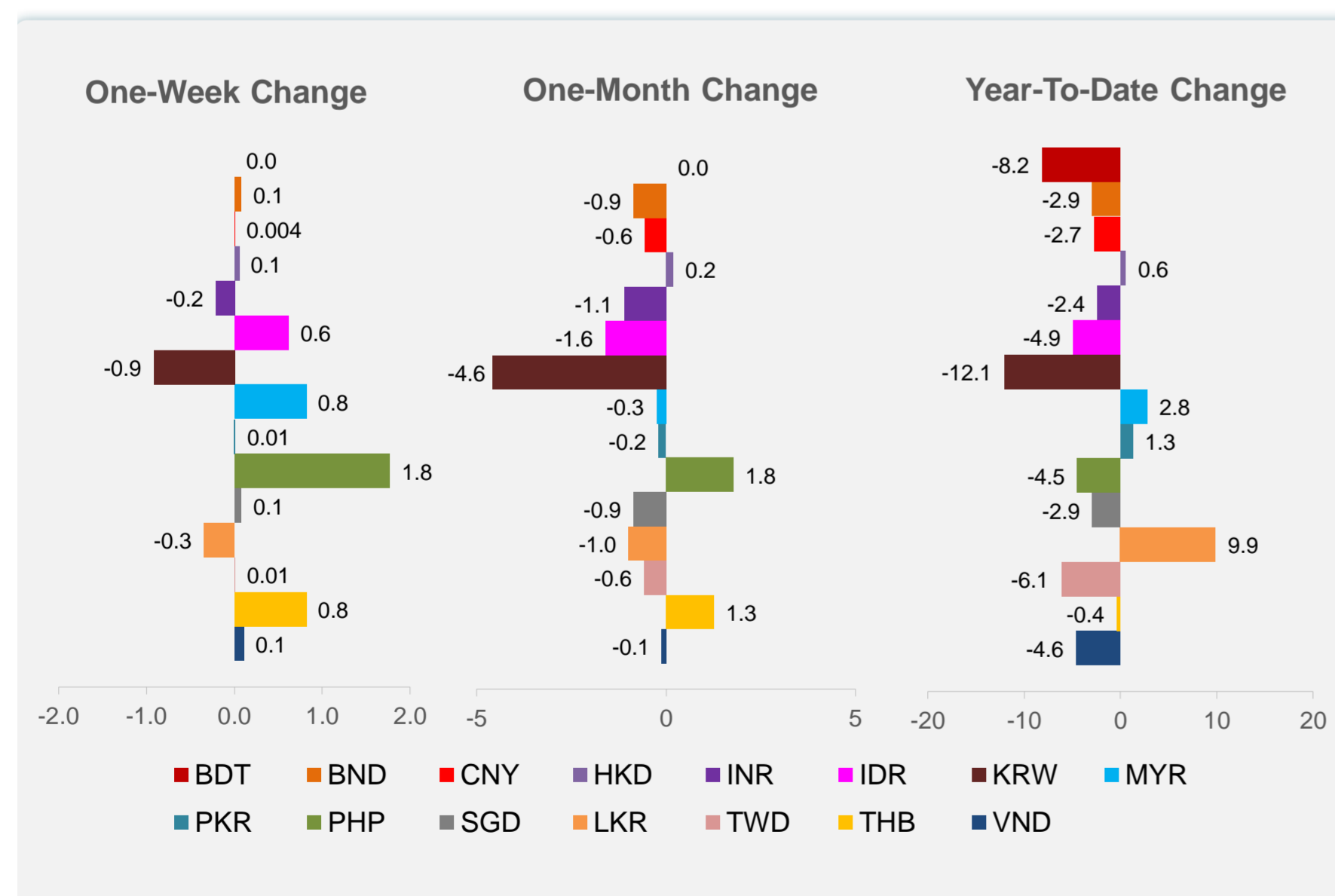
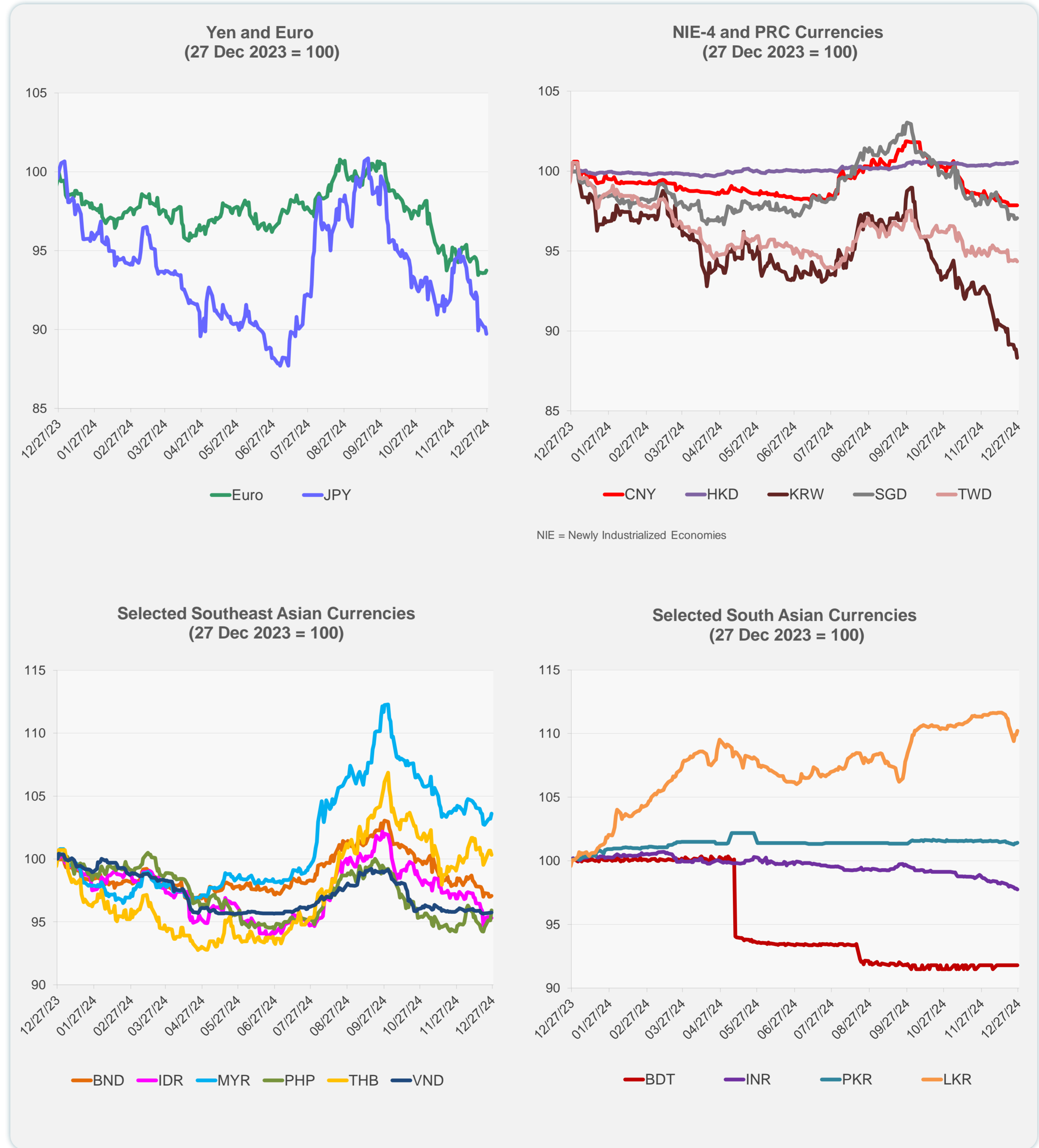
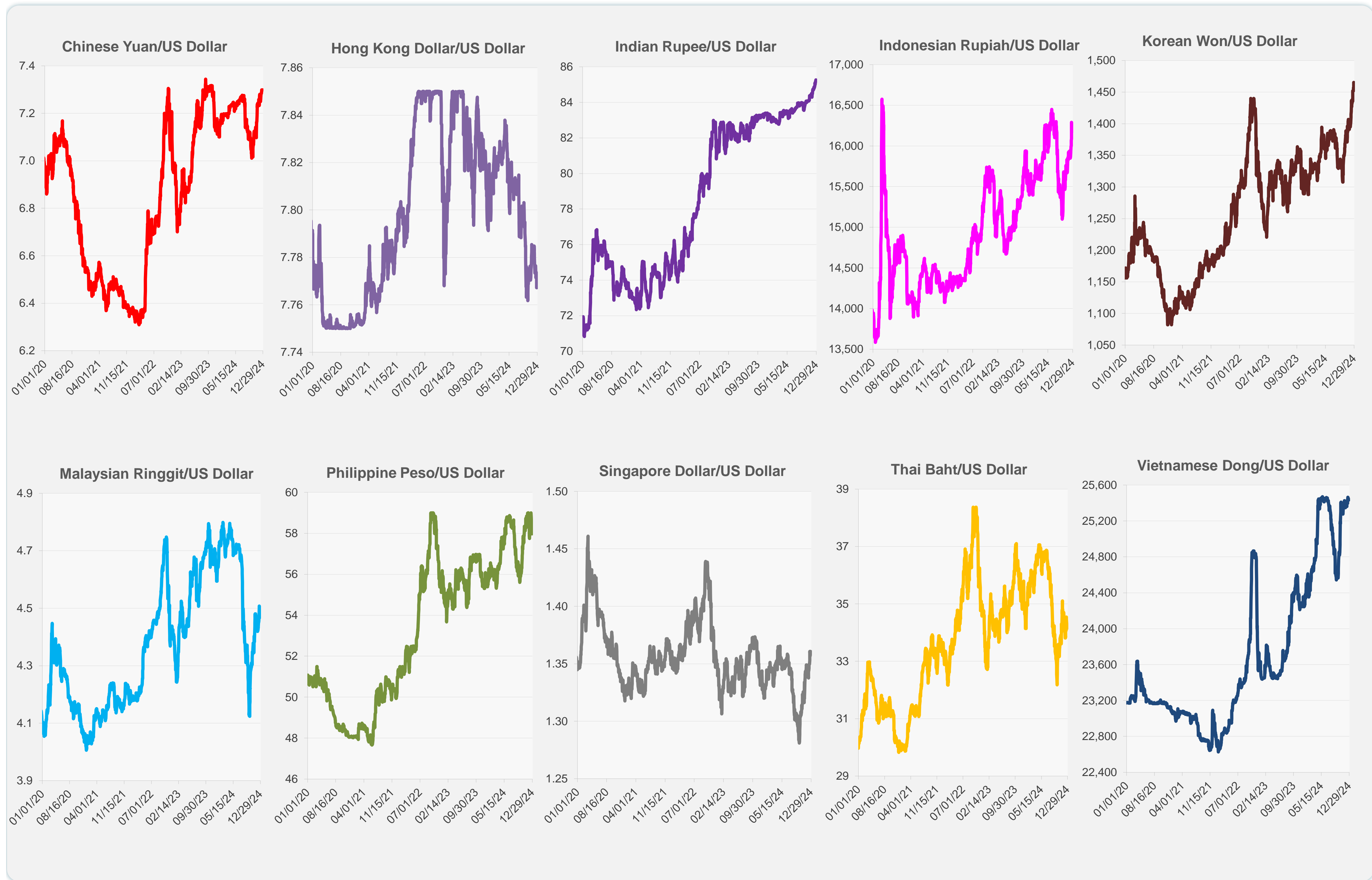


	Latest Closing	% change from Previous Day	% change from 01-Jan-24
Euro	0.96	0.17	-5.75
Japanese yen (JPY)	158.07	-0.46	-10.87
Bangladeshi taka (BDT)	119.50	0.00	-8.16
Brunei dollar (BND)	1.36	0.07	-2.90
Chinese yuan (CNY)	7.30	0.00	-2.73
Hong Kong dollar (HKD)	7.77	-0.01	0.56
Indian rupee (INR)	85.26	-0.07	-2.38
Indonesian rupiah (IDR)	16,190.00	0.00	-4.90
Korean won (KRW)	1,465.30	-0.60	-12.09
Malaysian ringgit (MYR)	4.47	0.40	2.80
Pakistan rupee (PKR)	278.28	0.04	1.28
Philippine peso (PHP)	57.97	0.83	-4.46
Singapore dollar (SGD)	1.36	0.07	-2.90
Sri Lanka rupee (LKR)	293.92	0.28	9.88
Taipei,China NT dollar (TWD)	32.72	-0.11	-6.14
Thai baht (THB)	34.27	-0.33	-0.36
Vietnamese dong (VND)	25,435.00	0.02	-4.59



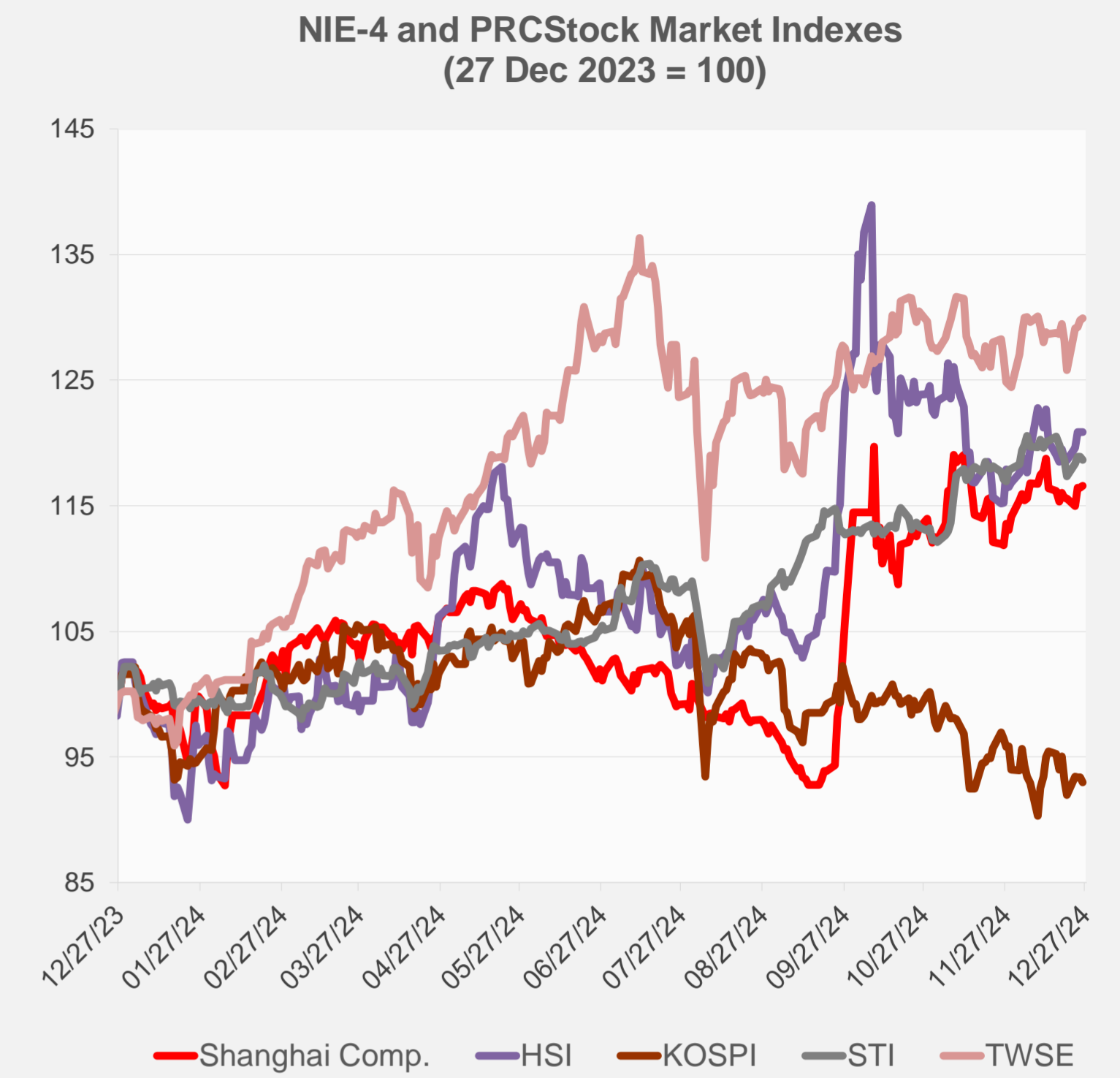
Note: Negative/Decreasing values indicate depreciation of local currency, and positive/increasing values indicate appreciation.  
Source: ADB calculations using data from Haver Analytics.



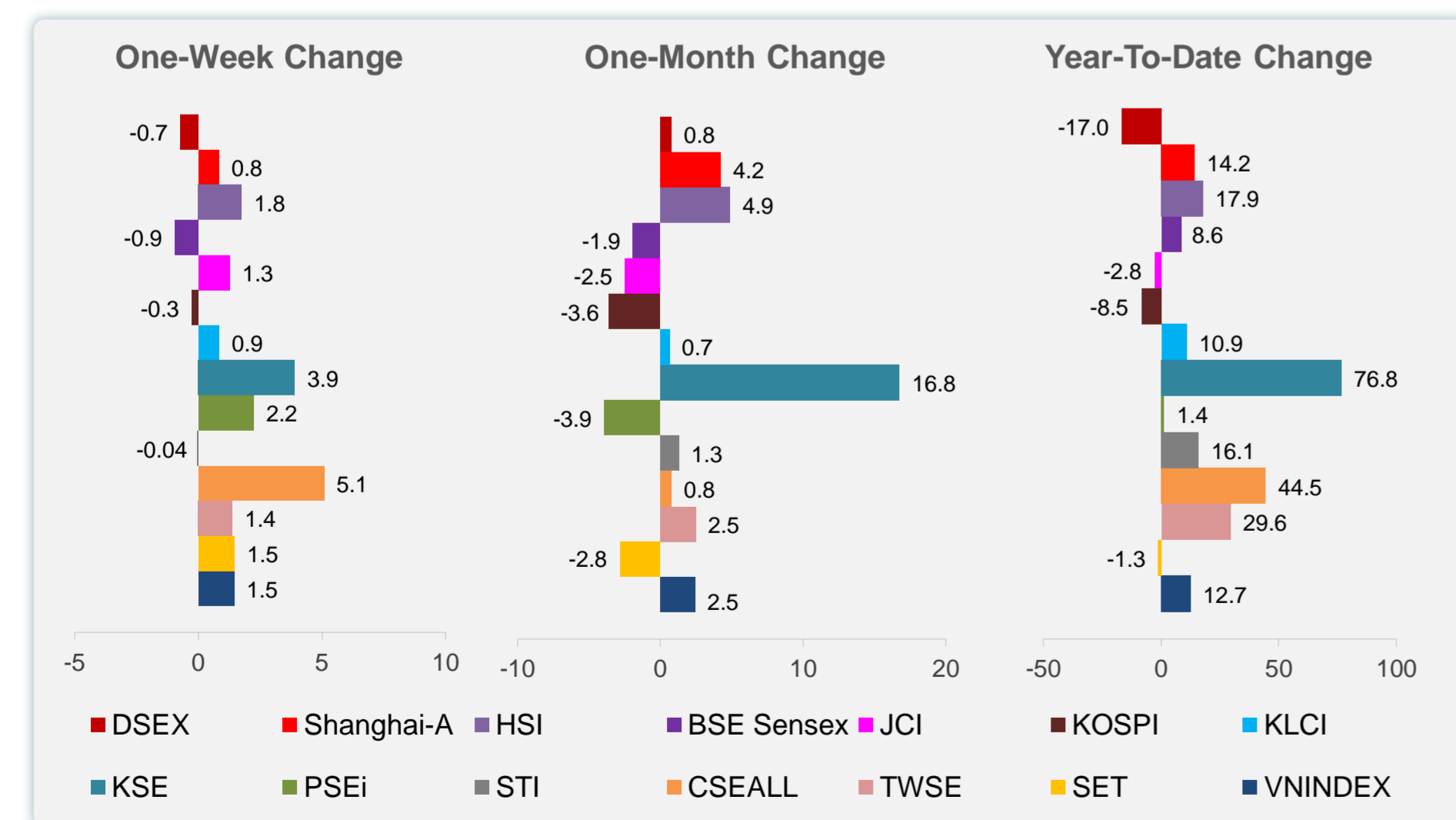
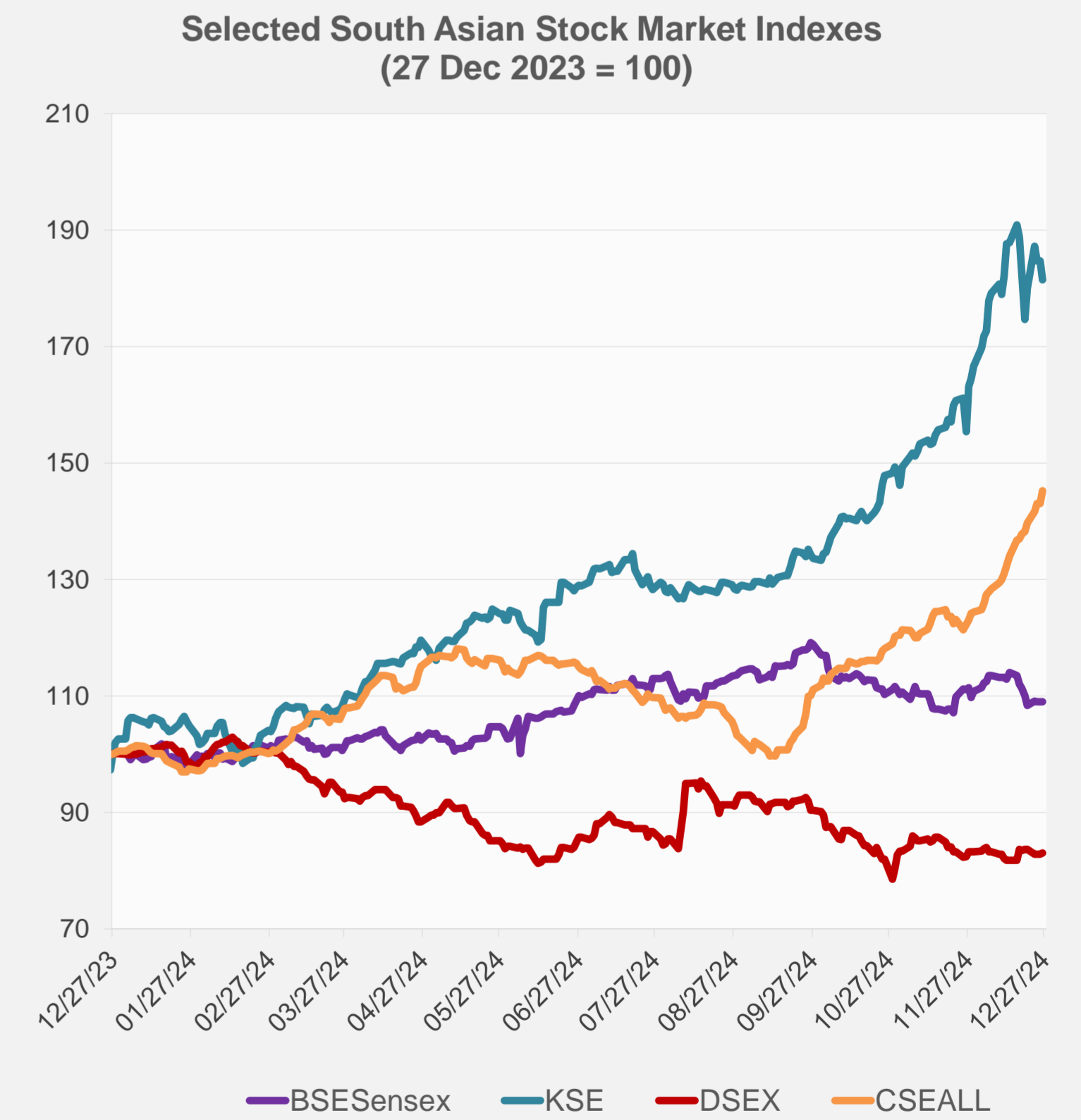
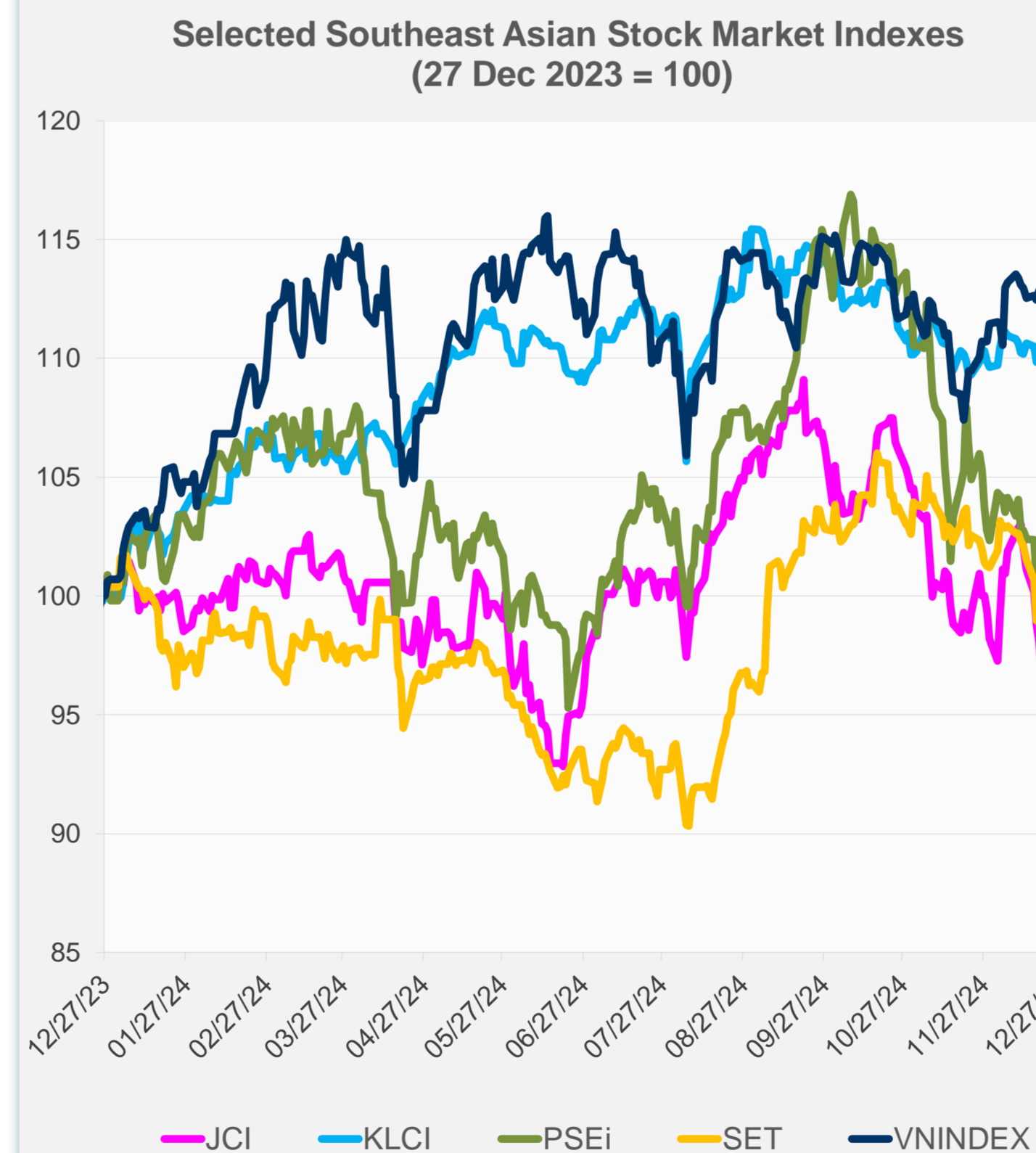
Source: Haver Analytics.

Daily Market Watch  
**STOCK INDEXES**

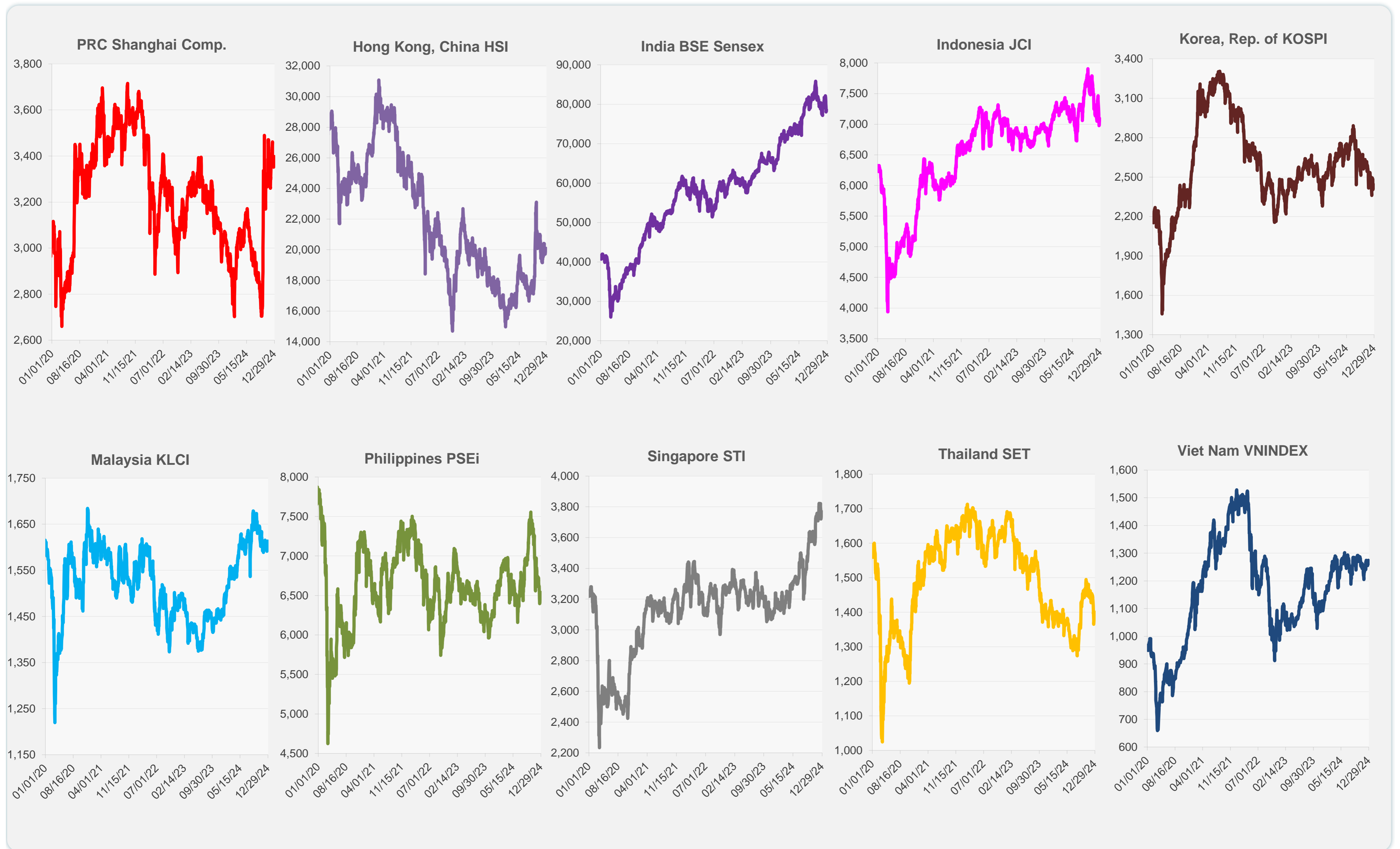
	Latest Closing	% change from Previous Day	% change from 01-Jan-24
US Dow Jones Ind Avg	43,325.80	0.07	14.95
US NASDAQ	20,020.36	-0.05	33.37
US S&P 500	6,037.59	-0.04	26.58
UK FTSE 100	8,136.99	0.00	5.22
EURO STOXX 50	4,857.86	0.00	7.44
Japan NIKKEI 225	39,568.06	1.12	18.24
Bangladesh DSEX	5,184.45	0.29	-16.95
PRC Shanghai Comp.	3,398.08	0.14	14.22
Hong Kong, China HSI	20,098.29	0.00	17.90
India BSE Sensex	78,472.48	0.00	8.58
Indonesia JCI	7,065.75	0.00	-2.85
Korea, Rep. of KOSPI	2,429.67	-0.44	-8.50
Malaysia KLCI	1,613.70	0.67	10.93
Pakistan KSE 100	110,423.32	-1.77	76.82
Philippines PSEi	6,539.02	0.06	1.38
Singapore STI	3,761.45	-0.21	16.08
Sri Lanka CSEALL	15,400.53	1.53	44.55
Taipei, China TWSE	23,246.94	0.12	29.65
Thailand SET	1,397.80	-0.22	-1.27
Viet Nam VNINDEX	1,272.87	-0.09	12.65



NIE = Newly Industrialized Economies



Sources: ADB calculations using data from CEIC Data Company and Haver Analytics.



Sources: CEIC Data Company and Haver Analytics.

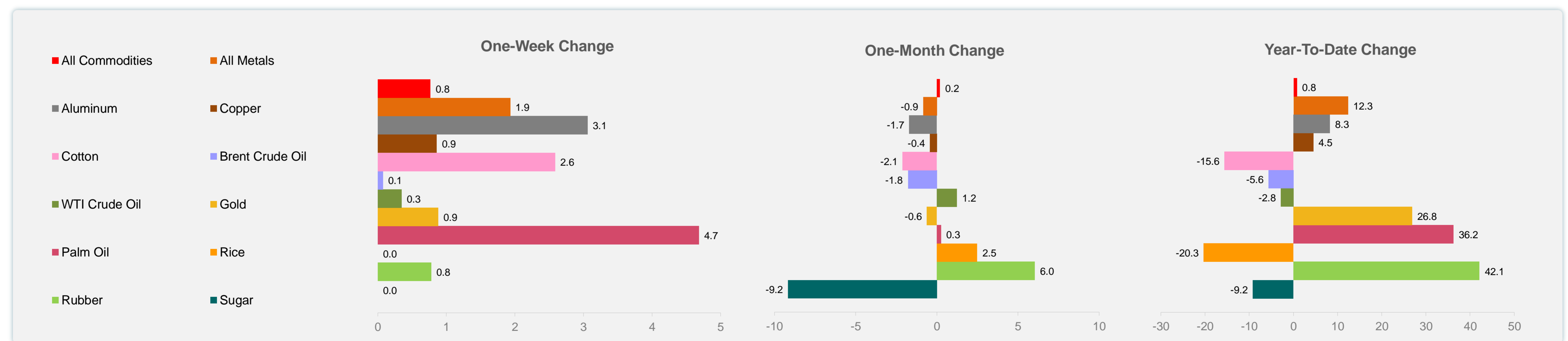
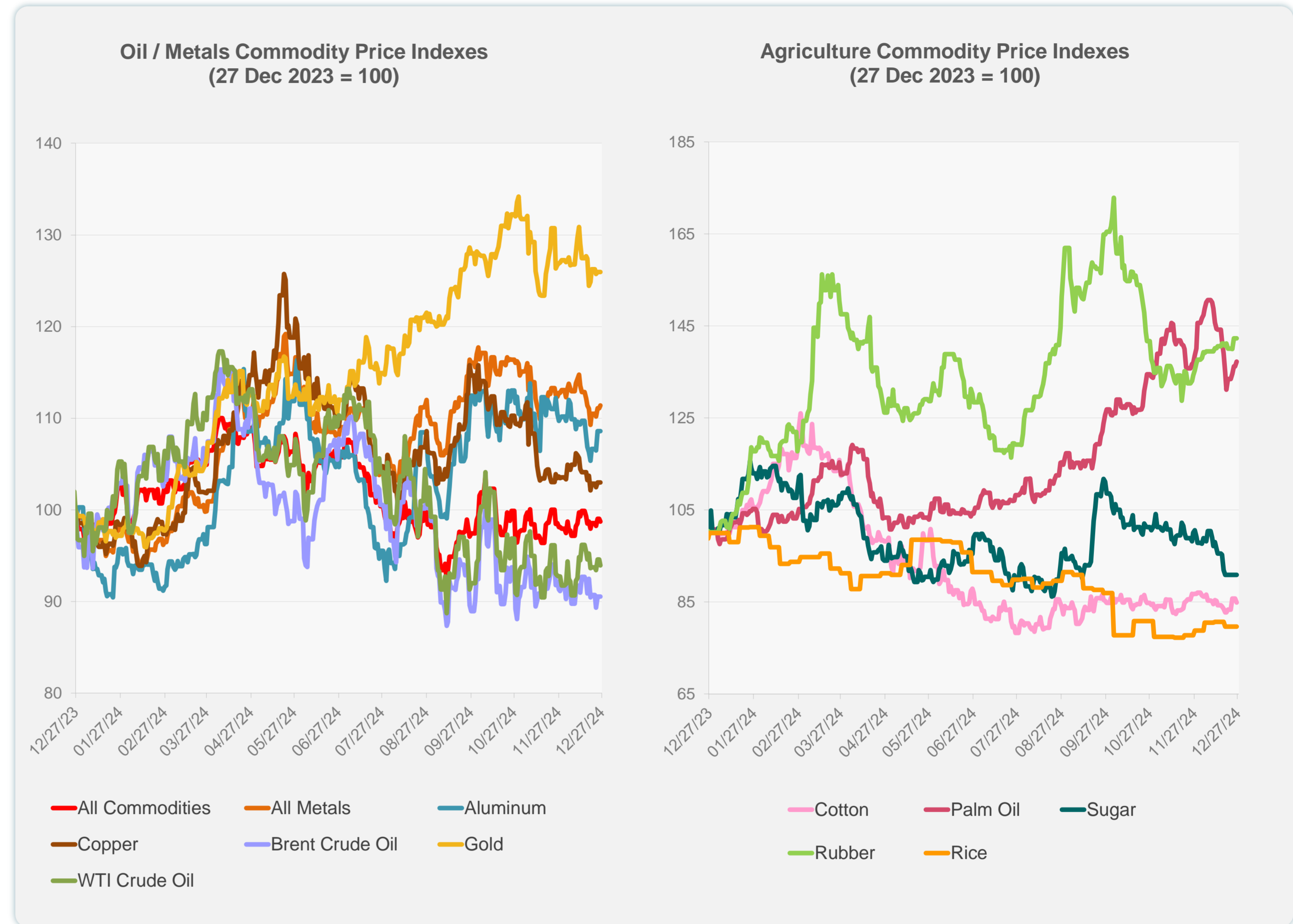
Daily Market Watch  
**COMMODITY PRICES**

27 December 2024, 9:00 AM Manila

	Unit	Latest Closing	% change from Previous Day	% change from 01-Jan-24
S&P All Commodities	US\$	540.00	-0.32	0.81
S&P All Metals	US\$	311.68	0.25	12.35
Aluminum	US\$/metric ton	2,539.49	0.00	8.27
Copper	US\$/metric ton	8,845.82	0.00	4.51
Cotton	US cents/lb	66.25	-1.00	-15.61
Brent Crude Oil	US\$/barrel	73.24	0.00	-5.62
WTI Crude Oil	US\$/barrel	69.62	-0.68	-2.83
Gold	US\$/troy oz	2,616.87	0.00	26.85
Palm Oil	US\$/metric tonne	1,101.97	0.75	36.22
Rice <sup>1</sup>	US\$/metric ton	537.00	0.00	-20.33
Rubber <sup>2</sup>	US\$/kg	246.00	0.00	42.11
Sugar	US cents/lb	18.59	0.00	-9.18

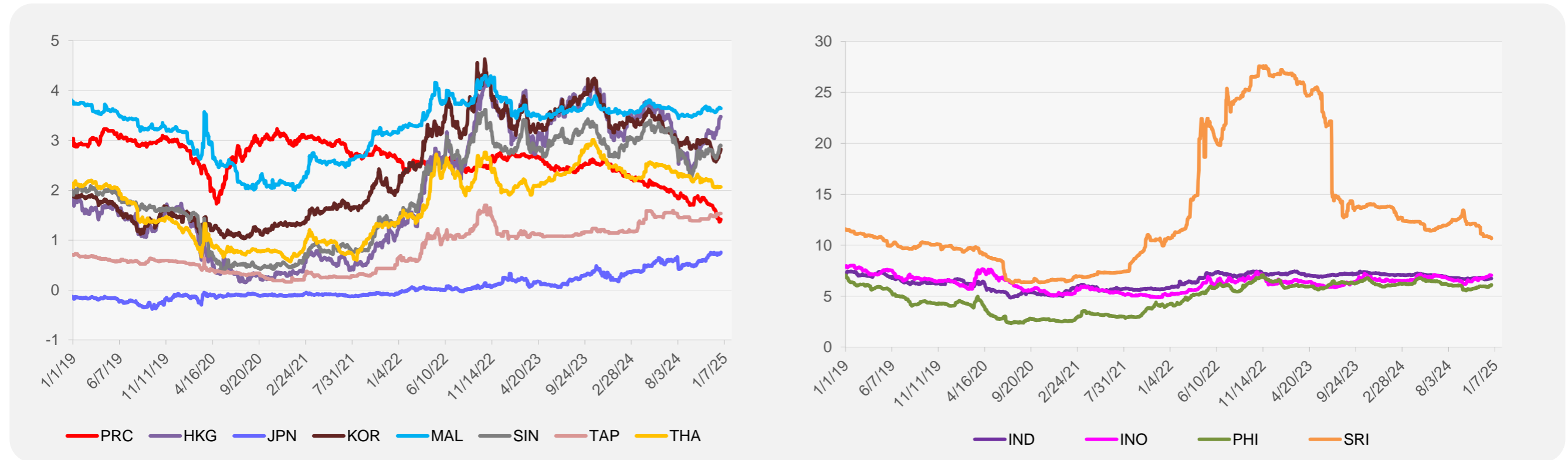
<sup>1</sup> Latest closing price from 18 December 2024.

<sup>2</sup> Singapore Exchange, Ribbed Smoked Sheet Rubber.

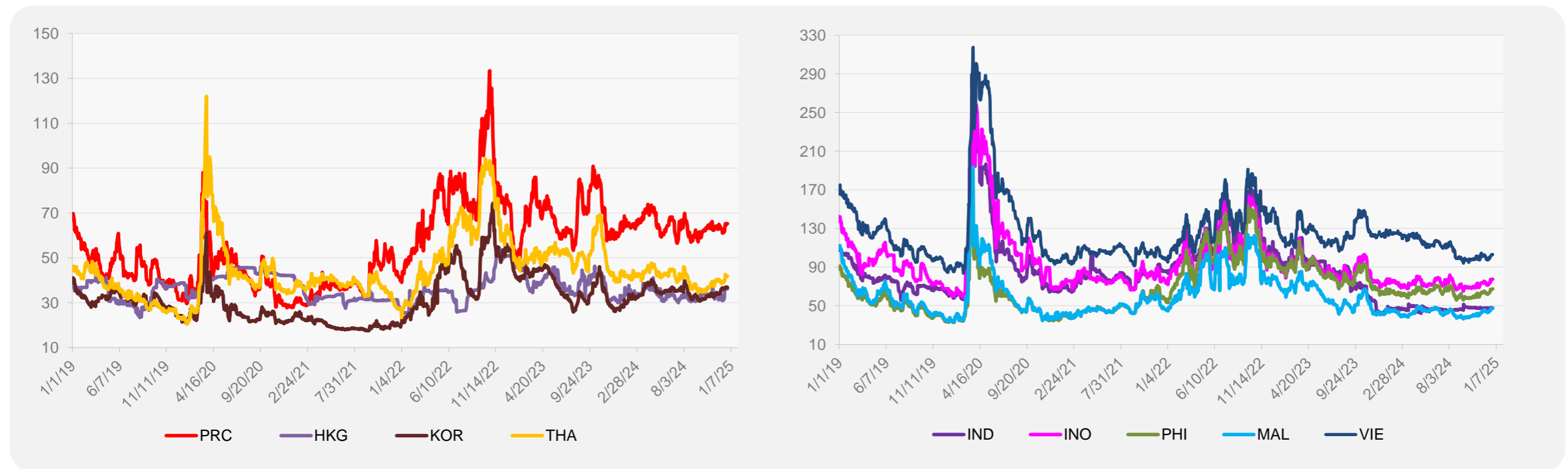


Source: ADB calculations using data from Bloomberg.

### 5-YEAR LOCAL CURRENCY GOVERNMENT BOND YIELDS (%)



### 5-YEAR CREDIT DEFAULT SWAP<sup>1</sup>



<sup>1</sup> In USD and based on sovereign bonds.  
Source: ADB calculations using data from Bloomberg.